



Acre Lane, Brixton, SW2

1 bedroom flat - purpose built for sale

£499,950

Leasehold

Property Details

An impressive one double bedroom penthouse apartment boasting dual-aspect, uninterrupted views of the London city skyline and surrounding area. This attractive, secure home boasts an appealing entertaining space, with high ceilings and parquet flooring, plus the sleekest of modern kitchens complete with integrated appliances and plenty of storage options. The living area is vast with ample room to relax, host and space for a large dining table. This apartment was specifically picked by the current owner because it is one of the few properties in the building with dual-aspect windows that flood the apartment with natural light and offer amazing panoramic views from the reception and bedroom. The property benefits from being nestled on the top floor with no neighbours above and this part of the building was newly constructed, so the entire 4th floor was a brand new addition with superior ceiling height, fantastic insulation, and doubled glazed windows throughout, ideal for energy efficiency. The bedroom is appealing and cosy, with a fantastic built-in wardrobe and there is further storage within the entrance hall. In keeping with the rest of the flat, the family-sized bathroom is high-quality and inviting.

Council tax band C

EPC rating B (81)

Features

- One double bedroom
- Panoramic city views
- Stunning Art-Deco style modern build
- Peacefully nestled on the top floor
- Almost 650 square feet of internal space
- High-end finishes and tasteful design throughout
- Lift and bike storage
- Central Brixton, moments from the Tube station and Brixton Village
- A short stroll to Brockwell Park

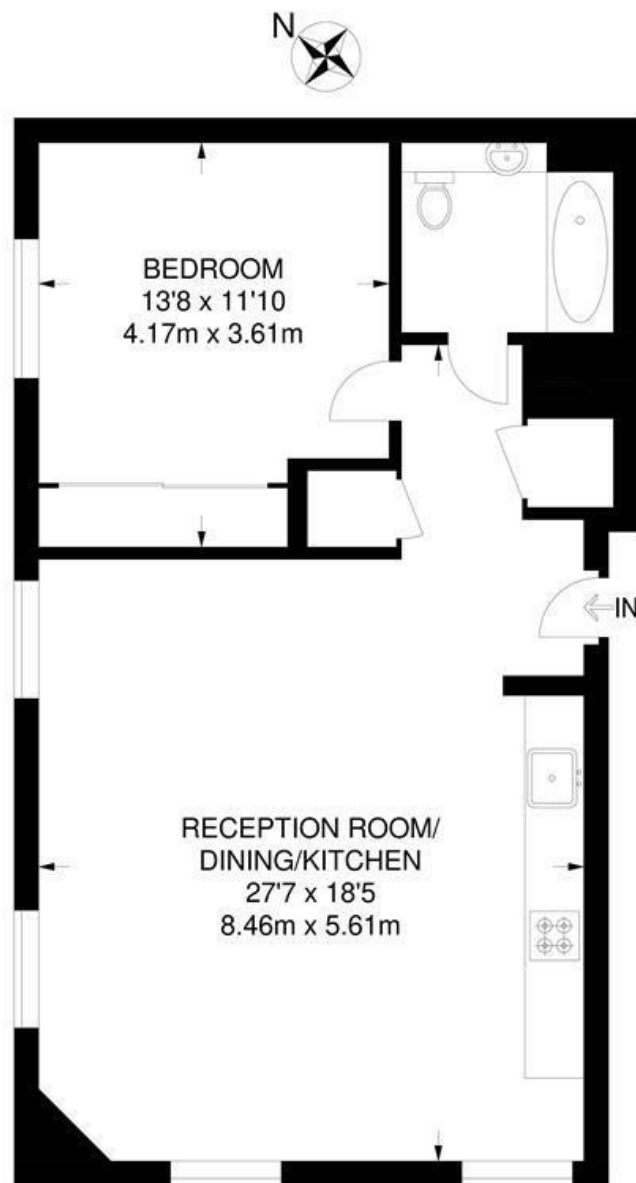


Acre Lane, Brixton, SW2

Ivor House, SW9

1 Bedroom Flat

APPROXIMATE TOTAL INTERNAL AREA: **646 SQ FT / 60 SQ M**



FOURTH FLOOR



While we try our very best, floor plans are produced as a guide only and we take no responsibility for the precise accuracy with which any property is represented.

Acre Lane, Brixton, SW2

